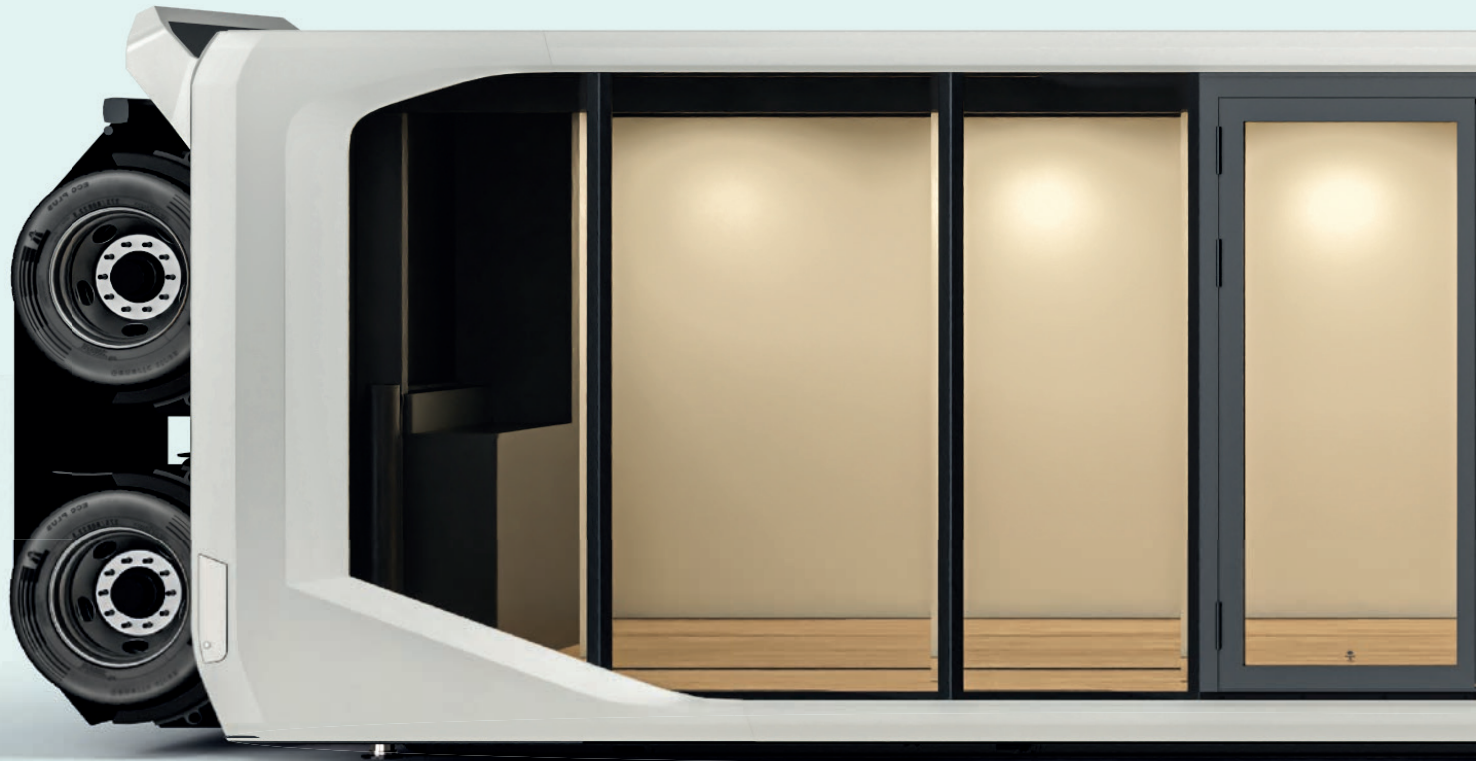


# Expandable Mansion

**create space**  
for your new  
luxury retreat



**Welcome to the Expandable Touchdown 53ft –**

the ultimate solution for modern, mobile living and working spaces.

This is more than just a trailer – it's a cutting-edge fusion of luxury, versatility, and efficiency. Designed with precision and attention to detail, the Expandable Touchdown 53ft offers unmatched adaptability and comfort, making it ideal as a mobile hub, a workspace, or a serene living retreat. Experience the freedom of mobility without compromising on quality, style, or functionality.

# Table of Contents



EXPANDABLE  
movable spaces

About Expandable **06**

---

About Mansion **10**

---

Floor plan **17**

---

Lighting plan **18**

---

Moodboard **19**

---



**Built for the road, designed for comfort**

With its innovative Expandable design, the Touchdown 53ft transforms from a streamlined trailer into a spacious mobile unit in under 30 minutes, offering unparalleled convenience for life on the move.

# Did you know?

**The Expandable Touchdown 53ft combines innovation and comfort in a sleek, mobile design.**

- ✓ Fully expands in under 30 minutes.
- ✓ Durable reinforced panels for strength and insulation.
- ✓ Optional rooftop terrace for added functionality.
- ✓ Dual AC system ensures comfort in any climate.



The Expandable Touchdown 53ft is built for those who value flexibility without sacrificing comfort. Its cutting-edge design ensures durability and adaptability, making it the perfect solution for both work and leisure. Whether you're hosting an event, traveling, or setting up a remote base, this unit delivers unmatched convenience and style.

# About **Expandable**

The Expandable Touchdown 53ft is expertly engineered to combine durability, functionality, and comfort in a single unit. Each feature has been carefully designed to maximize efficiency and usability, from its reinforced exterior structure to its meticulously planned interior layout. This section provides a detailed breakdown of its construction, including its premium materials, advanced systems, and customizable options, making it the ultimate solution for adaptable living and working spaces.

## Expandable Touchdown 53ft

- **Left side:** tilt swivel window master bedroom (with left side manual sliding door with door-step)
- **Right side:** premium glass with double-hinged doors on the right side
- **Front right and front left corners:** single door with glass
- **Rear left and right corners:** single door with glass
- **Rear middle:** large tech hub - with roller door
- Additional window options for ventilation and emergency exits
- **PVC Flooring:** vintage zinc black
- **Automatic leveling system:** included
- **Main color:** signal white (RAL7021)
- **Frame color:** black grey (RAL7021)
- **Central electric cupboard:** for connecting all electrical systems
- Installation all electrics to centralized fuse box
- **Shore power connections (50A):** 2 units

## Expandable Touchdown 53ft

- **LED lines (cool white):** 4 units
- High-capacity dual air conditioning
- The ultimate 12 kWh cooling solution with two high-capacity units.
- Two electricity ground pods
- Double electricity socket in each corner
- Flex rails | LED spots (12 pcs)
- Door-step (2)
- Cargo lashing points M12 (set of 8)
- **Shape:** Octagon outside
- **Reinforced sandwich panel:** with integrated wood inlay for enhanced durability and strength

## Effortless setup in under 30 minutes

The Expandable Touchdown 53ft is designed for unparalleled ease of use, offering a straightforward setup process that can be completed by just one person in under 30 minutes. Its intuitive design and automatic leveling system make transitioning from transport to a fully functional space seamless. Whether you're preparing for an event, setting up a workspace, or creating a living area, the Expandable ensures a hassle-free experience every time.



### Optional Expandable

- Roof terrace incl. beach flags base
- Floor heating
- Front middle | roof deck entry with stair
- Outdoor exterior LED lines (RGB)
- Cummins generator 50A 240V
- Left side manual sliding door

- Hybrid System Max Power: 31200 Wh;
  - 12 x Solar panels (375 Wp each) for a total of 4,500 Wp
  - 4 x Lithium MG batteries (304 Ah each), providing 7,800 Wh per battery
  - F2 x Victron Multiplus inverters (3,000 W each)
  - 1 x Victron Cerbo controller
  - 1 x MG Master



Enhance your Expandable Touchdown 53ft with optional features like a rooftop terrace for breathtaking views, integrated floor heating for year-round comfort, or outdoor RGB LED lighting for a stunning ambiance. Need extra power? The Cummins 50A generator ensures reliable energy wherever you are. Customize your unit to fit your unique lifestyle or business needs effortlessly.

# Features

- ✓ Effortlessly expands into a spacious, functional space in minutes.
- ✓ Durable reinforced panels and advanced climate control ensure comfort.
- ✓ Intelligent power systems and LED lighting provide efficiency.



# About **Mansion**

The Expandable Mansion 53ft Single combines smart design and premium materials to create a luxurious, fully-equipped living space. From innovative kitchen layouts to tailored storage solutions, every detail is designed for comfort and functionality.

## **Element 1; Storage cabinet**

- 13 - Storage cabinet

## **Element 2; Wardrobe cabinet kitchen / tall cabinet bedroom**

- 12 - Tall cabinet with shelves
- 18 - Cabinet with shelves, drawers, and pull-out section

## **Element 3; Kitchen, countertop, and appliances**

- 4-Waste - faucet - soap dispenser - sink
- 5-Dishwasher
- 6-Drawer cabinet with stove and extractor hood
- 7-Drawer cabinet - cutlery organizer
- 8-Tall cabinet with shelves
- 9-Freezer-cooler
- 10-Combi microwave oven - technical cabinet
- 11-Combi washer-dryer - technical cabinet
- 15-Wall cabinet with led strip

#### Element 4; Bedroom 1, foldable bed and tall cabinets

- 19-Folding king size bed 2000x1800
- 20-Cabinet with shelves, drawers, and pull-out sections

#### Element 5; Bathroom 1, walls, ceiling, and cabinets

- 21-Mirror
- 22-Frosted glass door
- 23-Techincal - 185 gallon clean tank

-Kinline shower deck

-Built in mixing tap with hand shower

-Kinewall 6mm wall covering

-D-line shampoo rack

-Built in rain shower

-D-line towel hoks

-Hi-macs wash bowl

-Build in mixing tap

-Broyeur toilet

-D-line toilet roll holder

-D-line toilet brush

-Soap dispencer

#### Element 6; Tank and boiler, tech, and storage cabinet

- 02-Tank and boiler - gray and black
  - 03-Tech
- Storage unit



*Master bedroom*

The bedroom combines comfort with smart design, featuring a foldable bed that maximizes space when not in use. Tall cabinets with shelves and pull-out sections provide generous storage for clothing and essentials. Premium materials and thoughtful lighting create a warm, functional retreat, ensuring restful nights and an organized living experience.

The bathroom is a modern oasis, equipped with a rain shower, built-in mixing taps, and high-quality fixtures for a spa-like experience. Ample storage is integrated into the sleek cabinets, along with practical features like a frosted glass door and a HI-MACS washbowl. Designed for both style and function, it offers a refreshing, elegant space for daily routines.



*Bathroom*



## Welcome to the Expandable Mansion

The Expandable Mansion is the pinnacle of modern mobile luxury, designed to exceed your expectations for comfort and style. Offering a seamless blend of convenience and elegance, it's perfect whether you need a versatile hub for your adventures or a peaceful retreat. With its flexible design and premium finishes, the Expandable Mansion ensures you never compromise on quality or comfort.



## Technical installations

- Technical room front near master bedroom

### Features:

Two waste water tank (133 gallon each for grey and black water)

Clean water tank (185 gallon)

Low-noise room with insulated walls

Water system

Drainage system

Toilet system (broyeur toilet) (2)

Shower system with 18,5 gallon electric boiler (2)

Water filtration system with carbon and ceramic filters, including a UV lamp

- Electrical preparation and lighting installation
- D-line set toilet accessoires

## Main entrance

A wooden door on the platform serves as the main entrance, doubling as additional storage space while driving. If the rooftop terrace is added as an option, this area also accommodates the staircase.

## Interior - core structure and finishing

- Ceiling finish for central section
- Luxaflex blackout duettes (25 mm, color gray 1026)
- Wall cladding

### Sliding doors:

Sliding door in rotating wall to master bedroom

Sliding door in rotating wall to technical room

Sliding door to guest bedroom

## Additional logistics costs

- Shipping to USA including transport to Greenville SC
- Import duties and local port fees

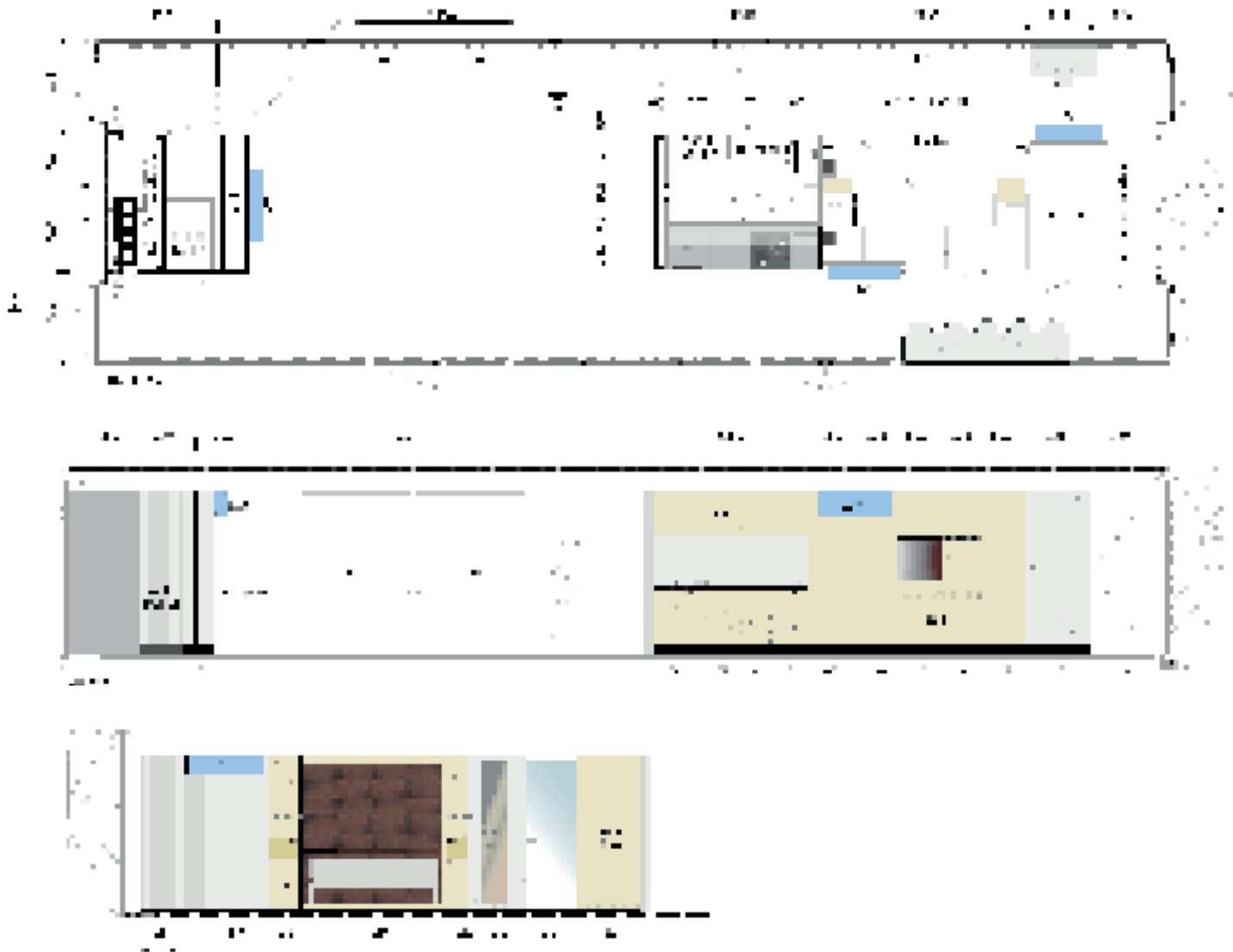
## Effortless control at your fingertips

The Expandable Touchdown 53ft features an integrated control panel designed for simplicity and efficiency. This intuitive system allows users to manage the unit's leveling, lighting, and other essential functions with ease.

Whether you're expanding the unit or adjusting its settings, the control panel streamlines every process, ensuring a seamless experience. Built for convenience, this technology puts complete control in your hands, making setup and adjustments quick and hassle-free.



# Floor plan



- 01-solid wall
- 02-tank and boilers - gray and black
- 03-tech
- 04-waste - faucet - soap dispenser - sink
- 05-dishwasher
- 06-drawer cabinet with stove and extractor hood
- 07-drawer cabinet - cutlery organizer
- 08-tall cabinet with shelves
- 09-freezer-cooler
- 10-combi microwave oven - technical cabinet
- 11-combi washer-dryer - technical cabinet
- 12-tall cabinet with shelves and hang sections
- 13-access door cabinet
- 14-portal Expandable
- 15-wall cabinet with LED strip
- 16-solid wall
- 17-solid wall
- 18-cabinet with shelves, drawers, and pull-out sections
- 19-folding bed 2000x1800
- 20-cabinet with shelves, drawers, and pull-out sections
- 21-mirror
- 22-frosted glass door
- 23-technical - 700L clean tank

# Lighting plan



1.1.1



1.1.2



1.1.3



1.1.4



1.1.5

- 1.1.1 - 1.1.4 - Recessed lighting fixtures
- 1.1.5 - Recessed lighting fixture
- 1.1.6 - Recessed lighting fixture
- 1.1.7 - Recessed lighting fixture
- 1.1.8 - Recessed lighting fixture
- 1.1.9 - Recessed lighting fixture
- 1.1.10 - Recessed lighting fixture
- 1.1.11 - Recessed lighting fixture
- 1.1.12 - Recessed lighting fixture
- 1.1.13 - Recessed lighting fixture
- 1.1.14 - Recessed lighting fixture
- 1.1.15 - Recessed lighting fixture
- 1.1.16 - Recessed lighting fixture
- 1.1.17 - Recessed lighting fixture
- 1.1.18 - Recessed lighting fixture
- 1.1.19 - Recessed lighting fixture
- 1.1.20 - Recessed lighting fixture
- 1.1.21 - Recessed lighting fixture
- 1.1.22 - Recessed lighting fixture
- 1.1.23 - Recessed lighting fixture
- 1.1.24 - Recessed lighting fixture
- 1.1.25 - Recessed lighting fixture
- 1.1.26 - Recessed lighting fixture
- 1.1.27 - Recessed lighting fixture
- 1.1.28 - Recessed lighting fixture
- 1.1.29 - Recessed lighting fixture
- 1.1.30 - Recessed lighting fixture
- 1.1.31 - Recessed lighting fixture
- 1.1.32 - Recessed lighting fixture
- 1.1.33 - Recessed lighting fixture
- 1.1.34 - Recessed lighting fixture
- 1.1.35 - Recessed lighting fixture
- 1.1.36 - Recessed lighting fixture
- 1.1.37 - Recessed lighting fixture
- 1.1.38 - Recessed lighting fixture
- 1.1.39 - Recessed lighting fixture
- 1.1.40 - Recessed lighting fixture
- 1.1.41 - Recessed lighting fixture
- 1.1.42 - Recessed lighting fixture
- 1.1.43 - Recessed lighting fixture
- 1.1.44 - Recessed lighting fixture
- 1.1.45 - Recessed lighting fixture
- 1.1.46 - Recessed lighting fixture
- 1.1.47 - Recessed lighting fixture
- 1.1.48 - Recessed lighting fixture
- 1.1.49 - Recessed lighting fixture
- 1.1.50 - Recessed lighting fixture
- 1.1.51 - Recessed lighting fixture
- 1.1.52 - Recessed lighting fixture
- 1.1.53 - Recessed lighting fixture
- 1.1.54 - Recessed lighting fixture
- 1.1.55 - Recessed lighting fixture
- 1.1.56 - Recessed lighting fixture
- 1.1.57 - Recessed lighting fixture
- 1.1.58 - Recessed lighting fixture
- 1.1.59 - Recessed lighting fixture
- 1.1.60 - Recessed lighting fixture
- 1.1.61 - Recessed lighting fixture
- 1.1.62 - Recessed lighting fixture
- 1.1.63 - Recessed lighting fixture
- 1.1.64 - Recessed lighting fixture
- 1.1.65 - Recessed lighting fixture
- 1.1.66 - Recessed lighting fixture
- 1.1.67 - Recessed lighting fixture
- 1.1.68 - Recessed lighting fixture
- 1.1.69 - Recessed lighting fixture
- 1.1.70 - Recessed lighting fixture
- 1.1.71 - Recessed lighting fixture
- 1.1.72 - Recessed lighting fixture
- 1.1.73 - Recessed lighting fixture
- 1.1.74 - Recessed lighting fixture
- 1.1.75 - Recessed lighting fixture
- 1.1.76 - Recessed lighting fixture
- 1.1.77 - Recessed lighting fixture
- 1.1.78 - Recessed lighting fixture
- 1.1.79 - Recessed lighting fixture
- 1.1.80 - Recessed lighting fixture
- 1.1.81 - Recessed lighting fixture
- 1.1.82 - Recessed lighting fixture
- 1.1.83 - Recessed lighting fixture
- 1.1.84 - Recessed lighting fixture
- 1.1.85 - Recessed lighting fixture
- 1.1.86 - Recessed lighting fixture
- 1.1.87 - Recessed lighting fixture
- 1.1.88 - Recessed lighting fixture
- 1.1.89 - Recessed lighting fixture
- 1.1.90 - Recessed lighting fixture
- 1.1.91 - Recessed lighting fixture
- 1.1.92 - Recessed lighting fixture
- 1.1.93 - Recessed lighting fixture
- 1.1.94 - Recessed lighting fixture
- 1.1.95 - Recessed lighting fixture
- 1.1.96 - Recessed lighting fixture
- 1.1.97 - Recessed lighting fixture
- 1.1.98 - Recessed lighting fixture
- 1.1.99 - Recessed lighting fixture
- 1.1.100 - Recessed lighting fixture

# Moodboard



**CEILINGS**  
Easy Felt  
Comfort white

**FIXED FURNITURE**  
Kaindl K5278  
Elm Sangallo  
Everglades

**FLOORS**  
Tarkett PVC  
Vintage Zinc-Black

**SKIRTINGS**  
U12000 XP  
volcan black



**WORKTOP** Hi-Macs M625  
Aurora Terra

**DRAWERS** Legrabox Carbon  
Black with black inlay

**FRONTS**  
Kainl K5278



**LONG OUTER WALL**  
Vescom Tonga 1082.15  
profile wallpaper



**WALLS & CUPBOARD  
INTERIOR**  
Poplar board  
Pfleiderer U-12204 SO



**BED BACK WALL**  
Walluxe Leathr  
Western wood  
Tiles 250x500mm



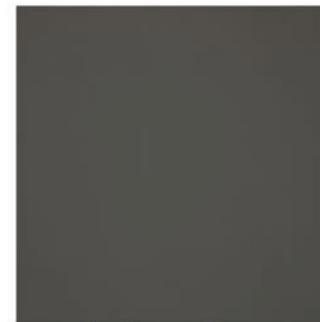
**BATHROOM ASSESOIRES**



**QUOOCKER FUSION**



**KINELINE** shower platform  
and **KINEWALL** wall covering  
Alpine white



Oval table top, flip top  
900+, flip top 750+  
& screen wall  
Fenix 0718 Grigio Londra

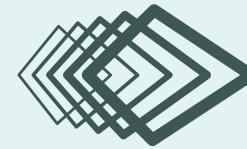


**SANITAIR**  
Hi-Macs S-028 Alpine white

**any questions?**  
contact us

**Expandable LLC**  
7120 Augusta Road,  
Piedmont, SC 29673

(864)-400-5095  
info@expandable-usa.com



**EXPANDABLE**  
movable spaces

[www.expandable-trailers.com](http://www.expandable-trailers.com)