

Expandable Mansion

create space
for your new
luxury retreat



Welcome to the Expandable Touchdown 44ft –

the ultimate solution for modern, mobile living and working spaces.

This is more than just a trailer – it's a cutting-edge fusion of luxury, versatility, and efficiency. Designed with precision and attention to detail, the Expandable Touchdown 44ft offers unmatched adaptability and comfort, making it ideal as a mobile hub, a workspace, or a serene living retreat. Experience the freedom of mobility without compromising on quality, style, or functionality.

Table of Contents



EXPANDABLE
movable spaces

About Expandable **06**

About Mansion **10**

Floor plan **17**

Lighting plan **18**

Moodboard **19**



Built for the road, designed for comfort

With its innovative Expandable design, the Touchdown 44ft transforms from a streamlined trailer into a spacious mobile unit in under 30 minutes, offering unparalleled convenience for life on the move.

Did you know?

The Expandable Touchdown 44ft combines innovation and comfort in a sleek, mobile design.

- ✓ Fully expands in under 30 minutes.
- ✓ Durable reinforced panels for strength and insulation.
- ✓ Optional rooftop terrace for added functionality.
- ✓ Dual AC system ensures comfort in any climate.



The Expandable Touchdown 44ft is built for those who value flexibility without sacrificing comfort. Its cutting-edge design ensures durability and adaptability, making it the perfect solution for both work and leisure. Whether you're hosting an event, traveling, or setting up a remote base, this unit delivers unmatched convenience and style.

About **Expandable**

The Expandable Touchdown 44ft is expertly engineered to combine durability, functionality, and comfort in a single unit. Each feature has been carefully designed to maximize efficiency and usability, from its reinforced exterior structure to its meticulously planned interior layout. This section provides a detailed breakdown of its construction, including its premium materials, advanced systems, and customizable options, making it the ultimate solution for adaptable living and working spaces.

Expandable Touchdown 44ft

- **Left side:** tilt swivel window master bedroom (with left side manual sliding door with door-step)
- **Right side:** premium glass with double-hinged doors on the right side
- **Front right and front left corners:** single door with glass
- **Rear left and right corners:** single door with glass
- **Rear middle:** large tech hub - with roller door
- Additional window options for ventilation and emergency exits
- **PVC Flooring:** vintage zinc black
- **Automatic leveling system:** included
- **Main color:** signal white (RAL7021)
- **Frame color:** black grey (RAL7021)
- **Central electric cupboard:** for connecting all electrical systems
- Installation all electrics to centralized fuse box
- **Shore power connections (50A):** 2 units

Expandable Touchdown 44ft

- **LED lines (cool white):** 4 units
- High-capacity dual air conditioning
- The ultimate 12 kWh cooling solution with two high-capacity units.
- Two electricity ground pods
- Double electricity socket in each corner
- Flex rails | LED spots (12 pcs)
- Door-step (2)
- Cargo lashing points M12 (set of 8)
- **Shape:** Octagon outside
- **Reinforced sandwich panel:** with integrated wood inlay for enhanced durability and strength

Effortless setup in under 30 minutes

The Expandable Touchdown 44ft is designed for unparalleled ease of use, offering a straightforward setup process that can be completed by just one person in under 30 minutes. Its intuitive design and automatic leveling system make transitioning from transport to a fully functional space seamless. Whether you're preparing for an event, setting up a workspace, or creating a living area, the Expandable ensures a hassle-free experience every time.



Optional Expandable

- Roof terrace incl. beach flags base
- Floor heating
- Front middle | roof deck entry with stair
- Outdoor exterior LED lines (RGB)
- Cummins generator 50A 240V
- Left side manual sliding door

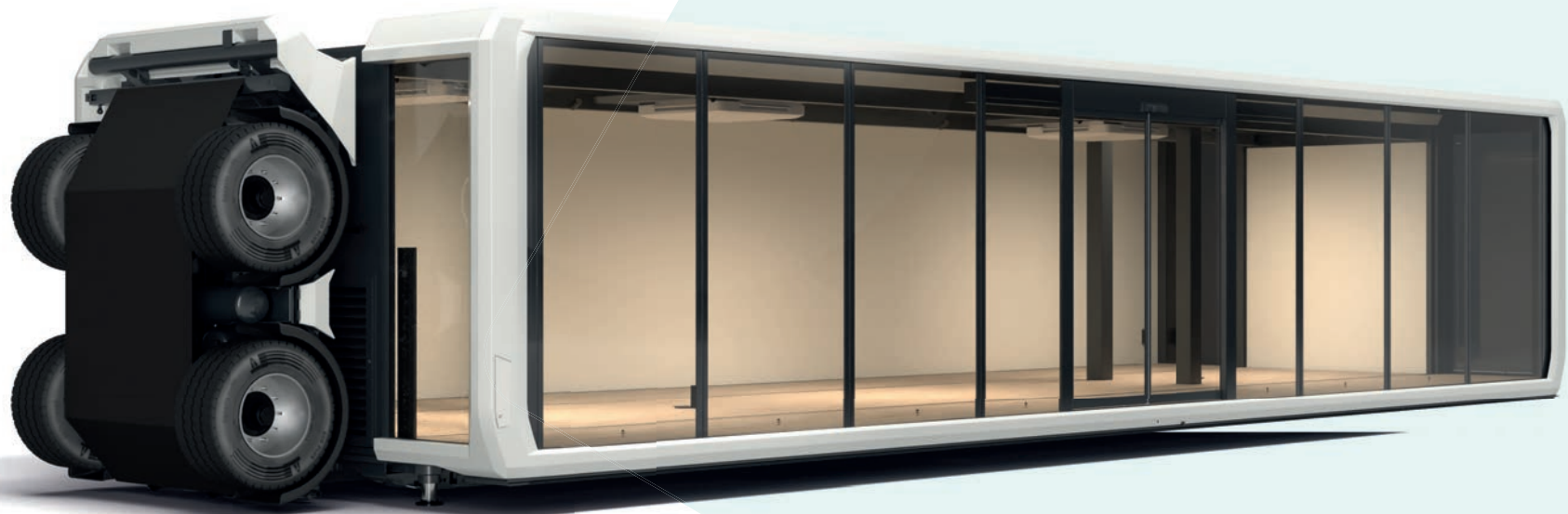
- Hybrid System Max Power: 31200 Wh;
 - 12 x Solar panels (375 Wp each) for a total of 4,500 Wp
 - 4 x Lithium MG batteries (304 Ah each), providing 7,800 Wh per battery
 - F2 x Victron Multiplus inverters (3,000 W each)
 - 1 x Victron Cerbo controller
 - 1 x MG Master



Enhance your Expandable Touchdown 44ft with optional features like a rooftop terrace for breathtaking views, integrated floor heating for year-round comfort, or outdoor RGB LED lighting for a stunning ambiance. Need extra power? The Cummins 50A generator ensures reliable energy wherever you are. Customize your unit to fit your unique lifestyle or business needs effortlessly.

Features

- ✓ Effortlessly expands into a spacious, functional space in minutes.
- ✓ Durable reinforced panels and advanced climate control ensure comfort.
- ✓ Intelligent power systems and LED lighting provide efficiency.



About **Mansion**

The Expandable Mansion 44ft Single combines smart design and premium materials to create a luxurious, fully-equipped living space. From innovative kitchen layouts to tailored storage solutions, every detail is designed for comfort and functionality.

Element 3; Kitchen, countertop, and appliances

- 4-Waste - faucet - soap dispenser - sink
- 5-Dishwasher
- 6-Drawer cabinet with stove and extractor hood
- 7-Drawer cabinet - cutlery organizer
- 8-Tall cabinet with shelves
- 9-Freezer-cooler
- 10-Combi microwave oven - technical cabinet
- 11-Combi washer-dryer - technical cabinet
- 12-Wall cabinet with led strip

Element 4; Bedroom 1, foldable bed and tall cabinets

- 13-Folding bed 2000x1800
- 14-Cabinet with shelves

Element 5; Bathroom 1, walls, ceiling, and cabinets

- 15-Mirror
- 16-Frosted glass door
- 17-Technical - 700 liter clean tank

-Kineline shower deck

-Hi-macs wash bowl

-Kinewall 6mm wall covering

-Build in mixing tap

-Built in rain shower

-Broyeur toilet

-Bult in mixing tap with hand shower

-D-line toilet roll holder

-D-line shampoo rack

-D-line toilet brush

-D-line towel hoks

-Soap dispencer

Element 8; Tank and boiler, tech, and storage cabinet

- 22-Tech
- 23-Storage unit
- 24-Tank and boiler - gray and black



Master bedroom

The bedroom combines comfort with smart design, featuring a foldable bed that maximizes space when not in use. Tall cabinets with shelves and pull-out sections provide generous storage for clothing and essentials. Premium materials and thoughtful lighting create a warm, functional retreat, ensuring restful nights and an organized living experience.

The bathroom is a modern oasis, equipped with a rain shower, built-in mixing taps, and high-quality fixtures for a spa-like experience. Ample storage is integrated into the sleek cabinets, along with practical features like a frosted glass door and a HI-MACS washbowl. Designed for both style and function, it offers a refreshing, elegant space for daily routines.



Bathroom



Welcome to the Expandable Mansion

The Expandable Mansion is the pinnacle of modern mobile luxury, designed to exceed your expectations for comfort and style. Offering a seamless blend of convenience and elegance, it's perfect whether you need a versatile hub for your adventures or a peaceful retreat. With its flexible design and premium finishes, the Expandable Mansion ensures you never compromise on quality or comfort.



Technical installations

- Technical room front near master bedroom

Features:

Two waste water tank (500 liter each for grey and black water)

Clean water tank (700 liter)

Low-noise room with insulated walls

Water system

Drainage system

Toilet system (broyeur toilet) (2)

Shower system with 70 liter electric boiler (2)

Water filtration system with carbon and ceramic filters, including a UV lamp

- Electrical preparation and lighting installation
- D-line set toilet accessoires

Main entrance

A wooden door on the platform serves as the main entrance, doubling as additional storage space while driving. If the rooftop terrace is added as an option, this area also accommodates the staircase.

Interior - core structure and finishing

- Ceiling finish for central section
- Luxaflex blackout duettes (25 mm, color gray 1026)
- Wall cladding

Sliding doors:

Sliding door in rotating wall to master bedroom

Sliding door in rotating wall to technical room

Sliding door to guest bedroom

Additional logistics costs

- Import duties and local port fees

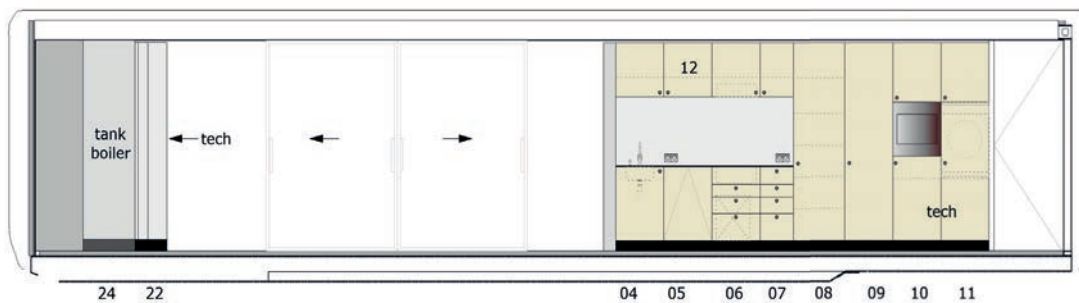
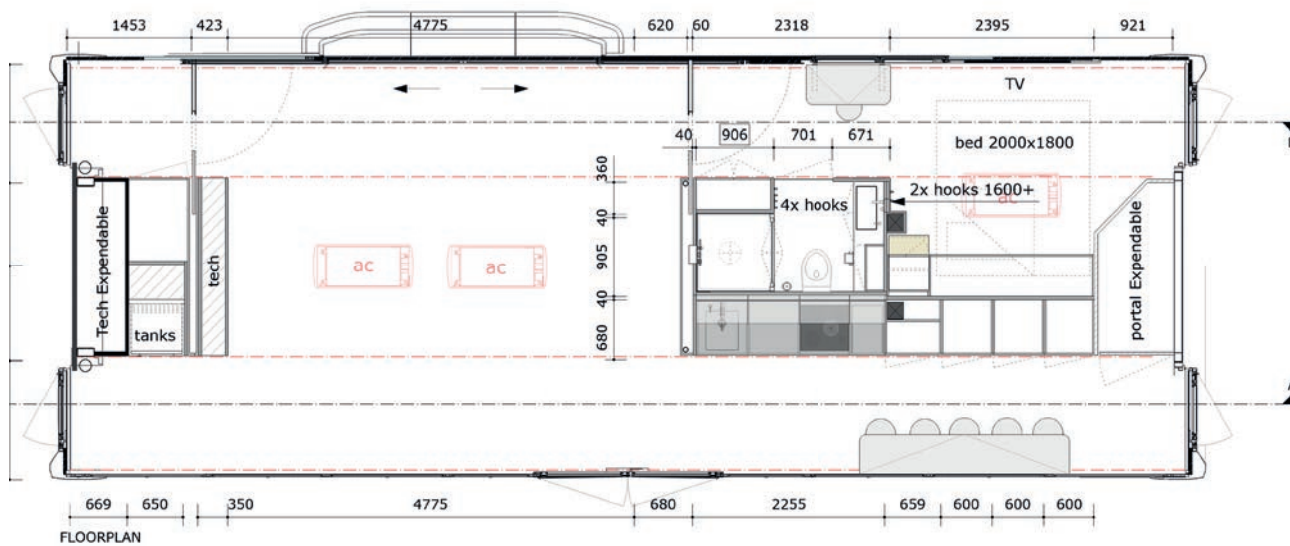
Effortless control at your fingertips

The Expandable Touchdown 44ft features an integrated control panel designed for simplicity and efficiency. This intuitive system allows users to manage the unit's leveling, lighting, and other essential functions with ease.

Whether you're expanding the unit or adjusting its settings, the control panel streamlines every process, ensuring a seamless experience. Built for convenience, this technology puts complete control in your hands, making setup and adjustments quick and hassle-free.

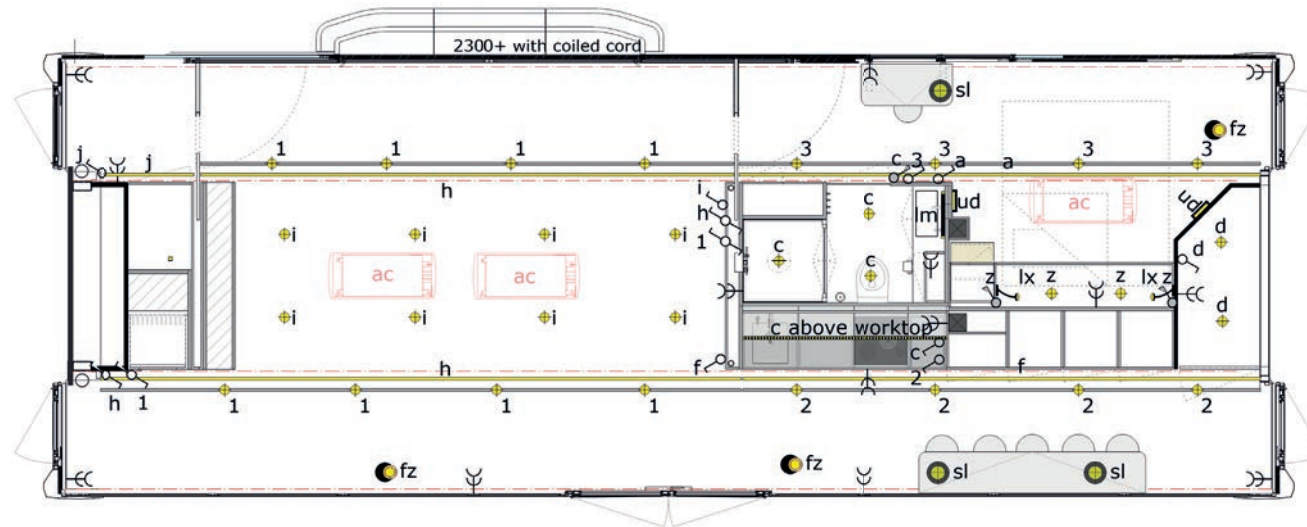


Floor plan



- 04-cooker - afval - kraan - zeepdispencer
- spoelbak
- 05-dishwasher
- 06-drawer cabinet with stove and extractor hood
- 07-drawer cabinet - cutlery organizer
- 08-tall cabinet with shelves
- 09-freezer-cooler
- 10-combi microwave oven - technical cabinet
- 11-combi washer-dryer - technical cabinet
- 12-wall cabinet with LED strip
- 13-folding bed 2000x1800
- 14-cabinet with shelves
- 15-mirror
- 16-frosted glass door
- 17-technical - 700L clean tank
- 21-mirror
- 22-tech
- 23-storage unit
- 24-tank and boilers - gray and black

Lighting plan



- fz RIETVELD 73192 floor lamp
- sl SANLUME table lamp chargeable
- lx LOOX-LED bedside lamp usb touch switch
- ud OTAN wall light up-down
- ◆ LED DOWN vibration resistant
- lm LED mirror touch switched
- 3 PHASE RAIL and LINIAIR LED horizontal ceiling
- - - LINIAIR LED kitchen cupboard
- LINIAIR LED upright with sensor

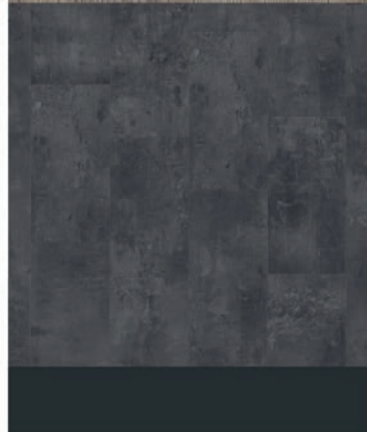
Moodboard



CEILINGS
Easy Felt
Comfort white



FIXED FURNITURE
Kaindl K5278
Elm Sangallo
Everglades



FLOORS
Tarkett PVC
Vintage Zinc-Black

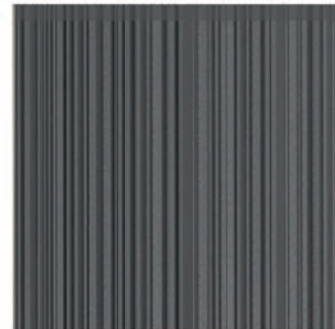
SKIRTINGS
U12000 XP
volcan black



WORKTOP Hi-Macs M625
Aurora Terra

DRAWERS Legrabox Carbon
Black with black inlay

FRONTS
Kaindl K5278



LONG OUTER WALL
Vescom Tonga 1082.15
profile wallpaper



**WALLS & CUPBOARD
INTERIOR**
Poplar board
Pfleiderer U-12204 SO



BED BACK WALL
Walluxe Leathr
Western wood
Tiles 250x500mm



BATHROOM ASSESOIRES



QUOOCKER FUSION



KINELINE shower platform
and **KINEWALL** wall covering
Alpine white



Oval table top, flip top
900+, flip top 750+
& screen wall
Fenix 0718 Grigio Londra



SANITAIR
Hi-Macs S-028 Alpine white

any questions?
contact us

Expandable Movable Spaces

Meerheide 25
5521 DZ Eersel
The Netherlands

+31(0)85 890 21 88
info@expandable.nl



EXPANDABLE
movable spaces

www.expandable-trailers.com